

---

## MAINTENANCE

---

*This documentation is provided or made accessible "AS IS" and "AS AVAILABLE" and without condition, endorsement, guarantee, representation, or warranty of any kind and IDimager Systems assumes no responsibility for any typographical, technical, or other inaccuracies, errors, or omissions in this documentation. IDimager System reserves the right to periodically change information that is contained in this documentation*

## Introduction

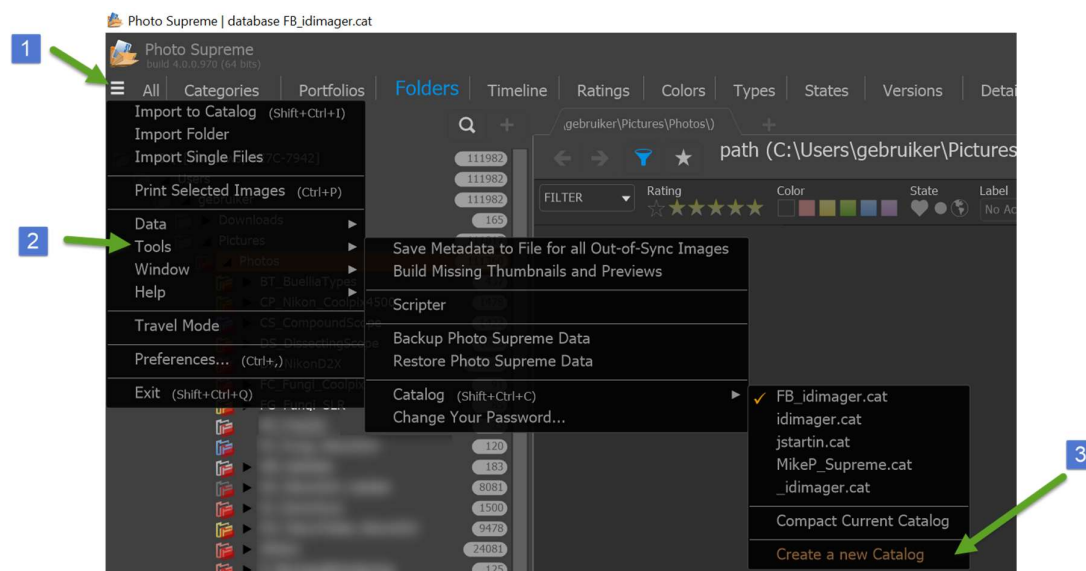
Photo Supreme is a “Digital Asset Management” tool. Photo Supreme makes it possible to manage your image files by categorizing them. It will categorize the files based on the available details of the file, this includes technical photo details, but also the location of the file on disk, etc. Apart from those properties you can add tags to the images, enrich the files with descriptions, or add custom information. This may sound like a very time-consuming task, but once you’ve worked through that yourself, you will benefit from the many advantages. With Photo Supreme at hand you will be able to quickly retrieve your images using all kinds of criteria or combinations.

This manual will outline some of the maintenance aspects of Photo Supreme

## Multiple Catalogs

You can use Photo Supreme to manage your archive in one or more catalogs. In general, I recommend using one single catalog and use the available management features to create logical sections. In some cases, however, for instance if you’d like to manage your private and professional images, it is recommended to separate them and use different catalogs.

To create a new catalog, you select that option from the Hamburger Menu. There, in Catalog, select the option to create a new catalog.

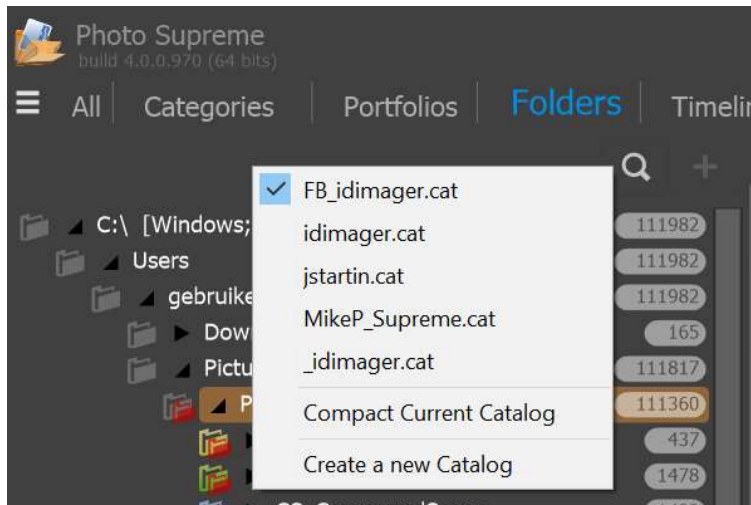


In the Server Edition you’ll get the option to create a new database with the Database Creation Dialog. IN the Single User Edition, you can enter a file name for the Catalog file. After clicking the Save button, the new database is created.

#### Switching Catalogs

When you're using multiple catalogs then there are two ways to switch catalogs. The first is to open the Preferences and then open the Catalog section. There, in Catalog Settings, click the folder icon to select a different database.

The second way is by using the shortcut method. From the application main screen, press Ctrl+Shift+C. Mac users press Cmd+Shift+C instead. That will open a popup with the catalogs that are available in the default catalog folder, as well as in the folder where the current database is stored (if not the same as the default catalog folder). Then select the Catalog that you'd like to open.



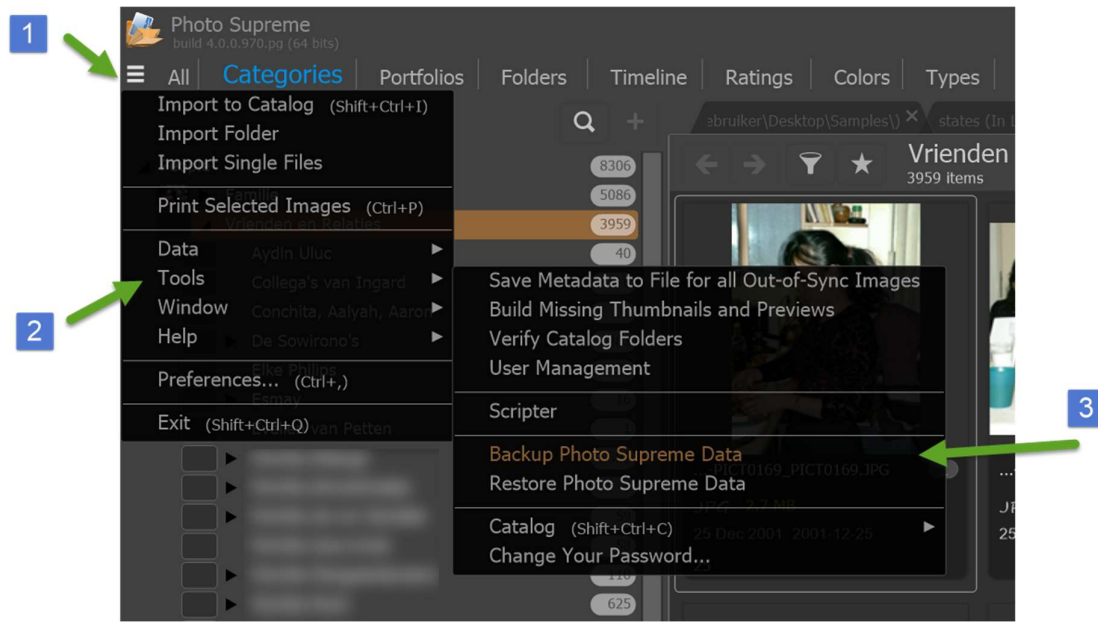
You can also select a catalog from the Hamburger menu->Tools->Catalog

#### Backup and Restore

Your catalog is stored in a catalog database file. As you invest more and more time in your catalog, it becomes important to safeguard that information. The backup feature is intended to help you store your database to a safe location.

#### Backup

To create a backup of your Catalog, select that option from the Tools menu.



You can then select your backup folder. This is the folder where you want to store the files that are created during a backup.

**IMPORTANT:** It is highly recommended that you backup your catalog to a secondary hard drive, either an external hard drive or a second hard drive inside your computer system. It is never recommended to create a backup in a folder stored on (any partition of) the same hard drive as where your catalog is stored.

After the backup is finished, the backup folder will then contain your catalog database, your thumbnails database, and your configuration files. In short: all information that is relevant for using Photo Supreme.

### Restore

Restoring a backup means that the application is reverted to the state as it was at the time that the backup is created. All changes made after that backup will be lost. It is important that you are aware of that.

To restore a backup then select that option from the Tools menu. You're then asked to point to the backup folder. That is the folder that you selected to create the backup. After confirming that folder the restore is activated. From that point on, there's no point of return and the catalog and application configuration is reverted to those from the backup folder.

### Compacting the Catalog

Compacting the Catalog means that the database is vacuumed, and the database file is rebuilt. This will also rebuild all the database indexes. It is recommended that you compact your catalog on a regular basis to clean up unused empty space that is left behind after deleting data from the database.

To compact the database, you select this option from the Tools menu.

Compacting the database may take some time to complete. Never kill the application process while the compact is running. That may permanently corrupt your database file.

## Migrating to a new computer

The quickest way to migrate your Photo Supreme to a new computer is by using the Backup and Restore feature.

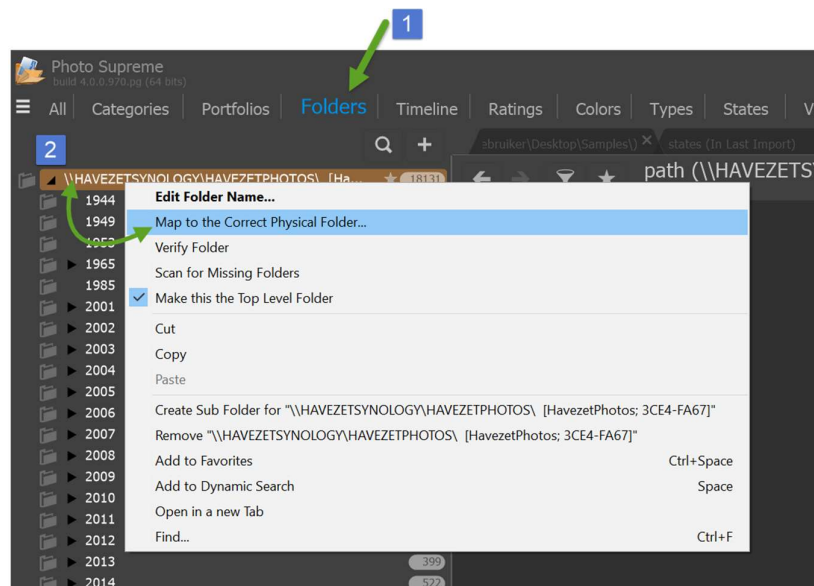
### On the old machine

1. Create a backup with "Tools | Backup Photo Supreme Data"
2. Backup to an external (USB?) hard drive
3. If applicable; copy your image folder(s) to the external hard drive

### On the new machine

1. Copy your image folder(s) to the new machine
2. Install Photo Supreme
3. Start Photo Supreme and restore your data with "Tools | Restore Photo Supreme Data". Point that to the backup folder as created earlier.

Your restored catalog contains references to the image files on your old computer (the drive's serial number). Your images won't be found because the new hard drive's serial number doesn't match the old one. The solution is to remap your top-level folder. Do this by opening the FOLDERS section in the Catalog. Then right click on the top-level folder (it's probably colored red) and select "Map to the Correct Physical Folder". Then point to the correct folder on your new hard drive.



## Command Line Startup Parameters

Photo Supreme can be started from the command line with the following parameters:

**-a <<folder>>** Photo Supreme will store all data files (e.g. options file, rename rules) in the local user's data folder (%localappdata% under Windows; the designated Library folder under MacOSX). With this startup parameter you can change the folder that should be used. Once you set this parameter, Photo Supreme will search for the data files in that folder.

Example:

```
C:\Program Files\IDimager Products\Photo Supreme\IDimagerSU.exe -a "d:\my data folder"
```

**-L <<folder>>** By default, Photo Supreme expects the license file to be stored in the Windows or macOS user Documents folder. With this startup parameter you can change the folder where Photo Supreme should search for the license file.

Example:

```
C:\Program Files\IDimager Products\Photo Supreme\IDimagerSU.exe -L "d:\my data folder\license"
```

**-portable** Use the -portable parameter to start Photo Supreme in a mode where it won't store any of its data on the computer but instead store its data on the medium (e.g. a USB memory stick) where Photo Supreme is ran from. This includes temporary data as well as registry key settings.

Example:

```
C:\Program Files\IDimager Products\Photo Supreme\IDimagerSU.exe -portable"
```

**-regfile** **Note; from build 1810 onwards this parameter is deprecated; use -regdb instead**

When this option is specified, Photo Supreme will not store any data to the registry but to a local file instead (in the application's data folder). You can specify the name of the file that you want to use.

Example:

```
C:\Program Files\IDimager Products\Photo Supreme\IDimagerSU.exe -regfile "mydata.idreg"
```

**-regdb** When this option is specified, Photo Supreme will not store any data to the registry but to a local database file instead. You can specify the name of the file that you want to use.

Example:

```
C:\Program Files\IDimager Products\Photo Supreme\IDimagerSU.exe -regfile "c:\myFiles\Photo Supreme\myregistry.iddb"
```

**-S <<database server instance name>>** Specify the name of the database instance you want to connect to. E.g *localhost\SQLExpress*

**-D <<database name>>** Specify the name of the database within the server database instance. By default, this is *photosupreme*

**-U <<username>>** Specify the application username that should be used to login. By default, this is *admin*

**-P <<password>>** Specify the login password for the application username. By default, this is *master2004*

Example:

```
C:\Program Files\IDimager Products\Photo Supreme\IDimagerSU.exe -S .\SQLExpress -D photosupreme -U admin -P master2004
```