
MAINTENANCE

This documentation is provided or made accessible "AS IS" and "AS AVAILABLE" and without condition, endorsement, guarantee, representation, or warranty of any kind and IDimager Systems assumes no responsibility for any typographical, technical, or other inaccuracies, errors, or omissions in this documentation. IDimager System reserves the right to periodically change information that is contained in this documentation.

Introduction

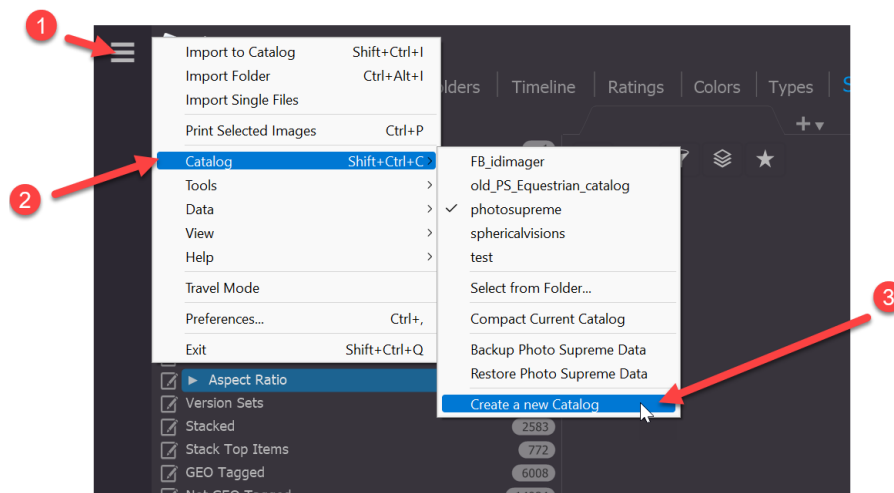
Photo Supreme is a “Digital Asset Management” tool. Photo Supreme makes it possible to manage your image files by categorizing them. It will categorize the files based on the available details of the file, this includes technical photo details, but also the location of the file on disk, etc. Apart from those properties you can add tags to the images, enrich the files with descriptions, or add custom information. This may sound like a very time-consuming task, but once you have worked through that yourself, you will benefit from the many advantages. With Photo Supreme at hand, you will be able to quickly retrieve your images using all kinds of criteria or combinations.

This manual will outline some of the maintenance aspects of Photo Supreme.

Multiple Catalogs

You can use Photo Supreme to manage your archive in one or more catalogs. In general, I recommend using one single catalog and use the available management features to create logical sections. In some cases, however, for instance if you would like to manage your private and professional images, it is recommended to separate them and use different catalogs.

To create a new catalog, you select that option from the Hamburger Menu. There, in Catalog, select the option to create a new catalog.



In the Server Edition you will get the option to create a new database with the Database Creation Dialog.

In the Single User Edition, you can enter a file name for the Catalog file. After clicking the Save button, the new database is created.

Switching Catalogs

When you are using multiple catalogs then there are two ways to switch catalogs. The first is to open the Preferences and then open the Catalog section. There, in Catalog Settings, click the folder icon to select a different database.

The second way is by using the shortcut method. From the application main screen, press Ctrl+Shift+C. macOS users press Cmd+Shift+C instead. That opens a popup with currently available Catalogs from the default catalog folder, as well as the Catalogs in the folder where the current database is stored (if not the same as the default catalog folder). Select the Catalog that you'd like to open.

You can also select a catalog from the Hamburger menu-> Catalog

Backup and Restore

Your catalog is stored in a database. As you invest more and more time in your catalog, it becomes important to safeguard that information. The backup feature is intended to help you store your database to a safe location.

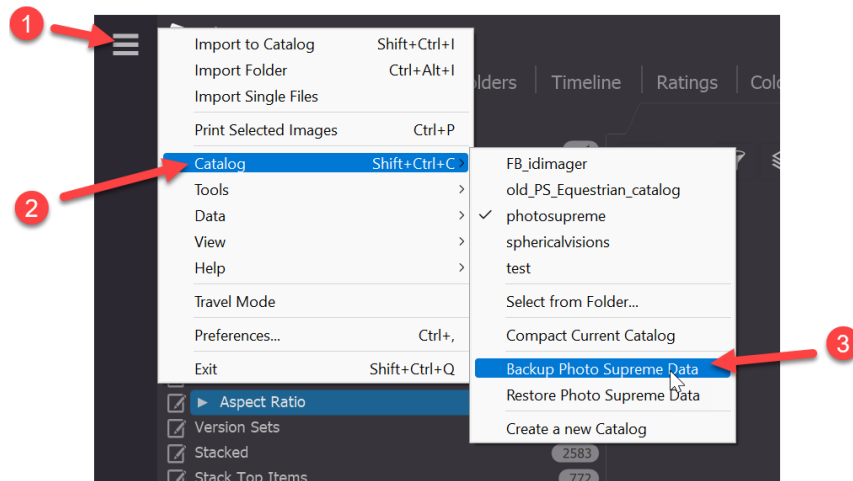
Backup

Tip: if you are using Photo Supreme Server Edition then it is recommended to use the backup feature of your database system. For PostgreSQL you can use pgAdmin to back up the database. For SQLServer you can use the Microsoft SQLServer Management Studio software to create the backup.

Time Machine: If you are running Photo Supreme on macOS and use Time Machine as your backup method then keep in mind that a Time Machine backup can be corrupt if it is taken while Photo Supreme is active.

**Do NOT rely on Time Machine as your catalog backup method.
Instead, create a backup to a folder using Photo Supreme and include the target folder in Time Machine.**

To create a backup of your Catalog, select that option from the Catalog menu in the Hamburger menu.



You can then select your backup folder. This is the folder where you want to store the files that are created during a backup.

IMPORTANT: It is highly recommended to store the backup of your catalog to a secondary hard drive, either an external hard drive or a second hard drive inside your computer system. It is never recommended to create a backup in a folder stored on (any partition of) the same hard drive as where your catalog is stored.

After the backup is finished, the backup folder contains your catalog database, your thumbnails database, and your configuration files: all information that is relevant for using Photo Supreme.

Restore

Tip: if you are using Photo Supreme Server Edition then it is recommended to use the restore feature of your database system. When restoring your backup as created with pgAdmin or SQLServer-Management Studio, then **always first create a new Photo Supreme database**. Then restore that database.

For PostgreSQL you can use pgAdmin. When creating a backup, then use the default settings. When restoring a backup with pgAdmin then do not forget to switch ON the option "**Clean before restore**". If you don't set this option, then the restore will fail.

For SQLServer you can use Microsoft SQLServer Management Studio.

Restoring a backup means that the application is reverted to the state as it was at the time that the backup is created. All catalog changes made after the moment of backup will be lost. It is therefore important to create a backup regularly.

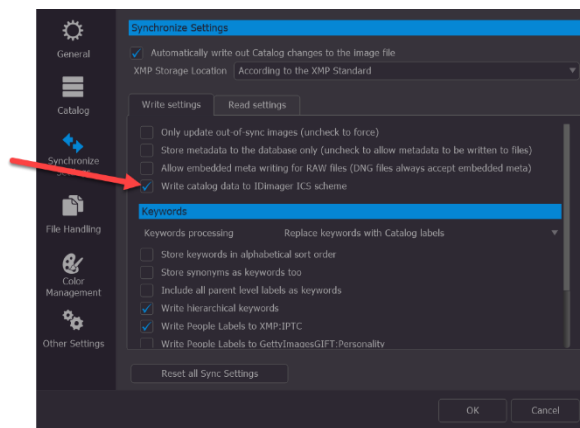
To restore a backup, you select that option from the Catalog menu. You are then asked to point to the backup folder. That is the folder where you previously created the backup in. After selecting the folder, the restore will start. From that point on, there is no point of

return, and the catalog and application configuration are reverted to those from the backup folder.

Restoring a catalog when no backup is available

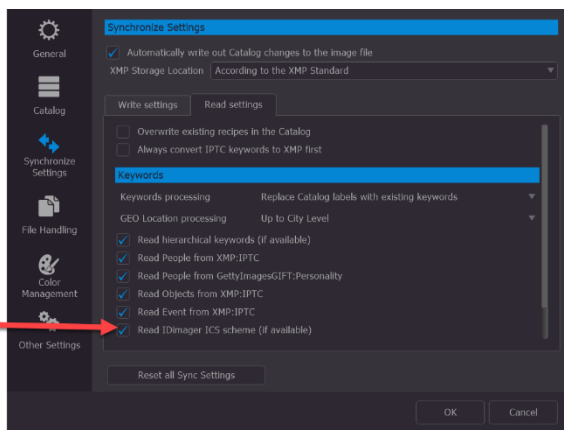
Photo Supreme by default also writes the ICS (IDImager Core schema) to the metadata of a file. This is your extra backup layer that you can restore from when all other restore options fail, e.g., no backup available.

Writing ICS is enabled by default, and it is not recommended to switch that off because it provides an extra backup layer that allows you to restore from when all other restore options fail, e.g., no backup available). Writing ICS is configured in the Preferences -> Synchronize Settings -> Write Settings.

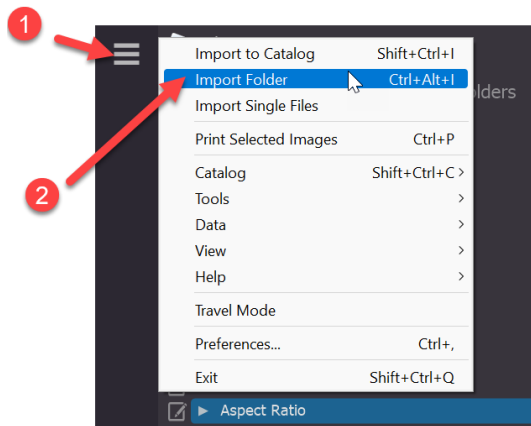


If your regular restore fails, then you can resort to restoring from the ICS schema.

1. To restore from ICS, you start with a new Catalog. The new catalog is empty.
2. First enable ICS reading. The ICS reading is disabled by default. Find the setting in the Preferences -> Synchronize Settings -> Read Settings. Enable that option in the new and empty catalog.



3. Click OK to apply the changed preferences
4. Now import from your image folder. Use the Hamburger menu -> Import from Folder for that.



5. When the images have ICS in the metadata then this ICS will be used to reconstruct the relevant catalog info.
6. **IMPORTANT:** Importing with ICS enabled slows down the import process. Once you have reconstructed the Catalog based on the ICS you should disabled the ICS reading again.

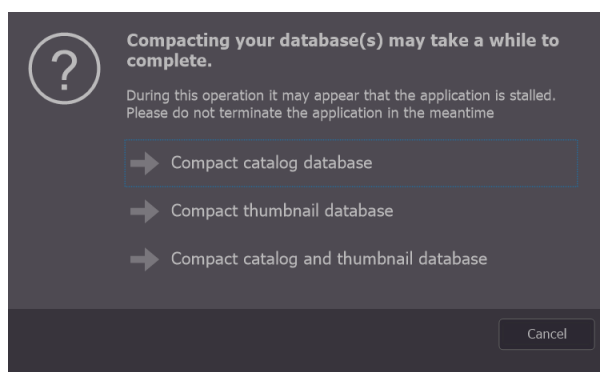
Compacting the Catalog

For every Catalog, Photo Supreme maintains two databases: the Catalog database and the Thumbnail database. The Catalog database contains all image references with their related data. The Thumbnail database contains all the thumbnails and previews of the images that exist in the Catalog database. The Thumbnails database typically takes up a lot more disk space than the Catalog database and takes longer to compact.

Compacting the Catalog means that the database is repacked into a minimal amount of disk space. This will also rebuild all the database indexes as well as clean up unused empty space that is left behind after deleting data from the database.

Photo Supreme keeps track of changes in the databases and will remind you when it's time to compact your Catalog and/or Thumbnails database. With regular use, you don't need to manually compact.

In case you do want to manually compact the database then select that option from the Hamburger→Catalog menu.



Compacting the databases takes some time to complete. Never kill the application process while the compact is running. If it appears that the application is stalled, then always check the CPU usage for Photo Supreme first. If there is CPU usage, then the compact is still in progress. Killing the application while compacting may result in permanent corruption of your database.

Moving the catalog files to another folder

This only applies to the Single User Edition

By default, the catalog files are stored in the dedicated application data folder of the OS.

For Windows this is `%localappdata%\IDimager Systems, Inc.\`

For macOS that is `~/Library/IDimager Systems, Inc./`

The Catalog folder can be found in the data folder.

If you prefer to keep the catalog files in another folder, then please note these points.

1. Always keep the catalog files on the fastest internal drive as available in your computer, preferably this should be an SSD drive.
2. Do **not** store the catalog files on a network drive. The catalog database is an SQLite database. SQLite is constantly creating and deleting temporary files which are error prone. The smallest hiccup in a network connection can (and will) corrupt your catalog.
3. **IMPORTANT:** Exclude the catalog folder from *every* virus scanner that you may have installed. SQLite constantly creates temporary files. Some virus scanners will want to scan these files. While doing so, the virus scanner locks the file and SQLite must wait for the files to be released. This will impact the database performance substantially. For Windows users: also exclude the catalog folder from the integrated virus scanner: Windows Defender.

To move the files:

1. Start Photo Supreme.
2. In Preferences enable the login dialog.
3. Close Photo Supreme.
4. Use your OS to move the `cat.db` and `thumbs.db` files to the folder of your choice (don't forget to exclude that folder from virus scanners too!).
5. Start Photo Supreme.
6. In the login dialog, point to the new catalog by selecting it from the folder.

7. Back in Photo Supreme, you can now disable the login dialog again.

Migrating to a new computer

The Backup and Restore option is the quickest way to transfer your Photo Supreme Catalog to a new computer.

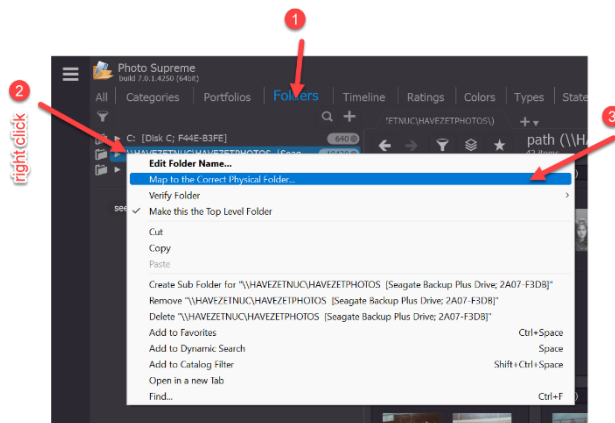
On the old computer

1. Create a backup as described earlier in this manual.
2. Backup to an external (USB or network or other) drive.
3. If applicable, copy your image folder(s) to the external drive.

On the new computer

1. Copy your image folder(s) to the new computer.
2. Install Photo Supreme.
3. Start Photo Supreme and restore your data with Hamburger→Catalog→Restore Photo Supreme Data. Point to the backup folder as created on the old computer.

Your restored catalog contains references to the image files on your old computer (the drive's serial number). Your images will not be found because the drive in your new computer uses a different serial number than the one in your old computer. Therefore, you need to remap the top-level folder. Do this by opening the FOLDERS section in the Catalog. Then right click on the top-level folder (it is probably colored red) and select "Map to the Correct Physical Folder". Then point to the matching root folder in the new computer.



Upgrading to a newer PostgreSQL version

This only applies to the Server Edition using PostgreSQL as its database

Photo Supreme Server Edition can be used with PostgreSQL as its database. PostgreSQL is actively developed open-source software and new major versions are released over time. Switching to such a new version is not straight forward.

Follow these steps if you want to upgrade your PostgreSQL version while keeping the Photo Supreme database.

Before installing the PostgreSQL update

1. Close all running Photo Supreme instances
2. Create a backup of the Catalog and Thumbnail database as described earlier in this manual.
3. Stop the existing PostgreSQL Service. Please refer to the PostgreSQL documentation if you do not know how.
4. Optional: Set the existing process to start manually to prevent it from starting after a system reboot. Please refer to the PostgreSQL documentation if you do not know how.
5. Install the new PostgreSQL version according to the Photo Supreme installation instructions. Do **not** use the same database folder as used for the old PostgreSQL database.
6. Make sure that you have Photo Supreme Server Edition installed for the matching PostgreSQL version.
7. Start Photo Supreme while holding down the keyboard combination (keep the keys pressed until the database creation dialog is shown)
 - a. Windows: Ctrl+Alt+Win
 - b. macOS: Ctrl+Cmd+Opt
8. Create a new catalog in the new PostgreSQL. You can use the same catalog name as used in the old version. After starting Photo Supreme you will have an empty catalog.
9. Close Photo Supreme
10. Now restore the catalog and the thumbnail databases as described earlier in this documentation (do not forget to set the restore option to Clean the database on restore).
11. Start Photo Supreme

You should now have your data back. Verify the content and afterwards you can uninstall the old PostgreSQL database and optionally delete the data folder of the old PostgreSQL version.

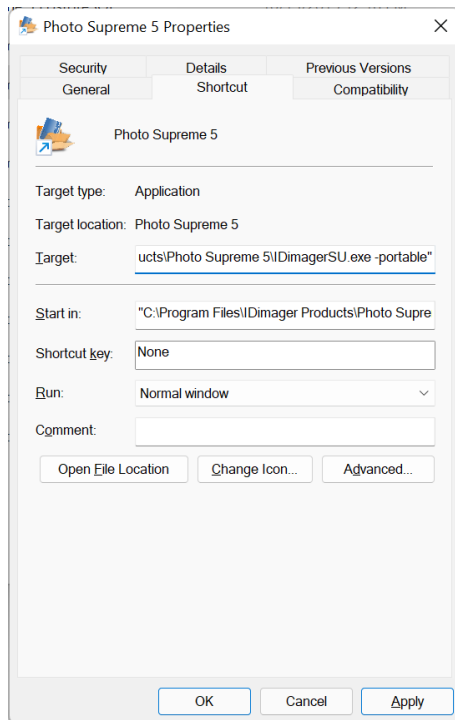
Command Line Startup Parameters

Photo Supreme can be started from the command line with different configuration parameters.

Windows

To add command line Parameters:

Right click on the Photo Supreme application icon in the Start menu. Then select Properties. In the properties, add the parameters after the executable name.



macOS

To add command line Parameters:

Create an application using the Apple Script Editor with the following AppleScript code:

```
do shell script "open -a '/Applications/Photo Supreme.app' --args <<parameters>>"
```

After the `-args` parameter, replace `<<parameters>>` with the needed parameters from the list below.

Test the script by clicking the Run button in the Apple Script Editor. Then use File -> Export and export as an application by setting the File Format to **Application**.

Parameters

The following parameters can be used:

- a <<folder>>** Photo Supreme will store all data files (e.g., options file, rename rules) in the local user's data folder (%localappdata% under Windows; the designated Library folder under macOS). With this startup parameter you can change the folder that should be

used. Once you set this parameter, Photo Supreme will search for the data files in that folder.

Example:

```
C:\Program Files\IDiMager Products\Photo  
Supreme\IDiMagerSU.exe -a "d:\my data folder"
```

-tmp <<folder>>

By default, temporary files are stored in the TEMP folder as defined in the Operating System.

With this startup parameter you can change the folder that should be used as the TEMP folder.

Example:

```
C:\Program Files\IDiMager Products\Photo  
Supreme\IDiMagerSU.exe -tmp "d:\my temp folder"
```

-L <<folder>>

By default, Photo Supreme expects the license file to be stored in the Windows or macOS user Application Data folder. With this startup parameter you can change the folder where Photo Supreme should search for the license file.

Example:

```
C:\Program Files\IDiMager Products\Photo  
Supreme\IDiMagerSU.exe -L "d:\my data folder\license"
```

-portable

Use the -portable parameter to start Photo Supreme in a mode where it will not store any of its data on the computer but instead store its data on the medium (e.g., a USB memory stick) where Photo Supreme is ran from. This includes temporary data as well as registry key settings.

Example:

```
C:\Program Files\IDiMager Products\Photo  
Supreme\IDiMagerSU.exe -portable"
```

-regdb <<filename>>

When this option is specified, Photo Supreme will not store any data to the registry but to a local database file instead. You can specify the name of the file that you want to use.

Example:

```
C:\Program Files\IDiMager Products\Photo  
Supreme\IDiMagerSU.exe -regdb "c:\myFiles\Photo  
Supreme\myregistry.iddb"
```

-runscript <<filename>> When this option is specified, Photo Supreme will run a script on startup. You can specify the file name of the script to start.

Example:

```
C:\Program Files\IDimager Products\Photo  
Supreme\IDimagerSU.exe -runscript "c:\myFiles\Photo  
Supreme\Scripts\startupscript.psc"
```

-S <<database server instance name>> Specify the name of the database instance you want to connect to. E.g *localhost\SQLExpress*

-O <<port>> Specify the port number of the database

-D <<database name>> Specify the name of the database within the server database instance. By default, this is *photosupreme*

-U <<username>> Specify the application username that should be used to login. By default, this is *admin*

-P <<password>> Specify the login password for the application username. By default, this is *master2004*

Example:

```
C:\Program Files\IDimager Products\Photo  
Supreme\IDimagerSU.exe -S .\SQLExpress -D photosupreme -U  
admin -P master2004
```

-AD Use Active Directory authentication in the Server Edition for Windows. Also see the User Management manual for additional information

-IDIMAGER_MAIN_PWD (Server Edition Only)

To use a different password for the *idimager_main* database user then you can use this command line parameter. First keep the default password, then start Photo Supreme and press Ctrl+Alt+Shift+X and enter the password that you'd like to use.

That copies the encrypted password to the clipboard. Pass that here as a parameter.

Example:

```
C:\Program Files\IDimager Products\Photo  
Supreme\IDimagerSU.exe -IDIMAGER_MAIN_PWD  
9F828E1957A45E49559D
```

-UL <<lang>> Start Photo Supreme with a pre-defined language. Use the 2 letter ISO language code, e.g. **-ul fr** to start Photo Supreme in French

Uninstall Photo Supreme

On uninstall, Photo Supreme will not delete the catalog folder and data folder. That is to prevent someone from losing their data when they want to re-install Photo Supreme.

Windows

Use the “Settings -> Add or remove programs” in Windows to uninstall Photo Supreme.

To manually remove the specific data that is not removed on uninstall:

1. Go to the folder %localappdata%
2. Delete the folder IDimager Systems, Inc with all its sub folders.
3. Open regedit
4. Expand to HKEY_CURRENT_USER\Software
5. From the left panel, delete the IDimager Systems, Inc. key

macOS

Open Finder->Applications and drag the Photo Supreme application to the Bin. That uninstalls Photo Supreme.

To manually remove the specific data that is not removed on uninstall:

1. Open macOS Finder
2. Open the Go menu
3. Keep the Opt (alt) key pressed to display the Go->Library menu item in the Go menu
4. Click on the Go->Library menu item while keeping the Opt key pressed. That opens the Library folder

5. From the Library folder, drag the IDiMager Systems, Inc. folder to the Bin
6. Empty the bin to flush the files from disk